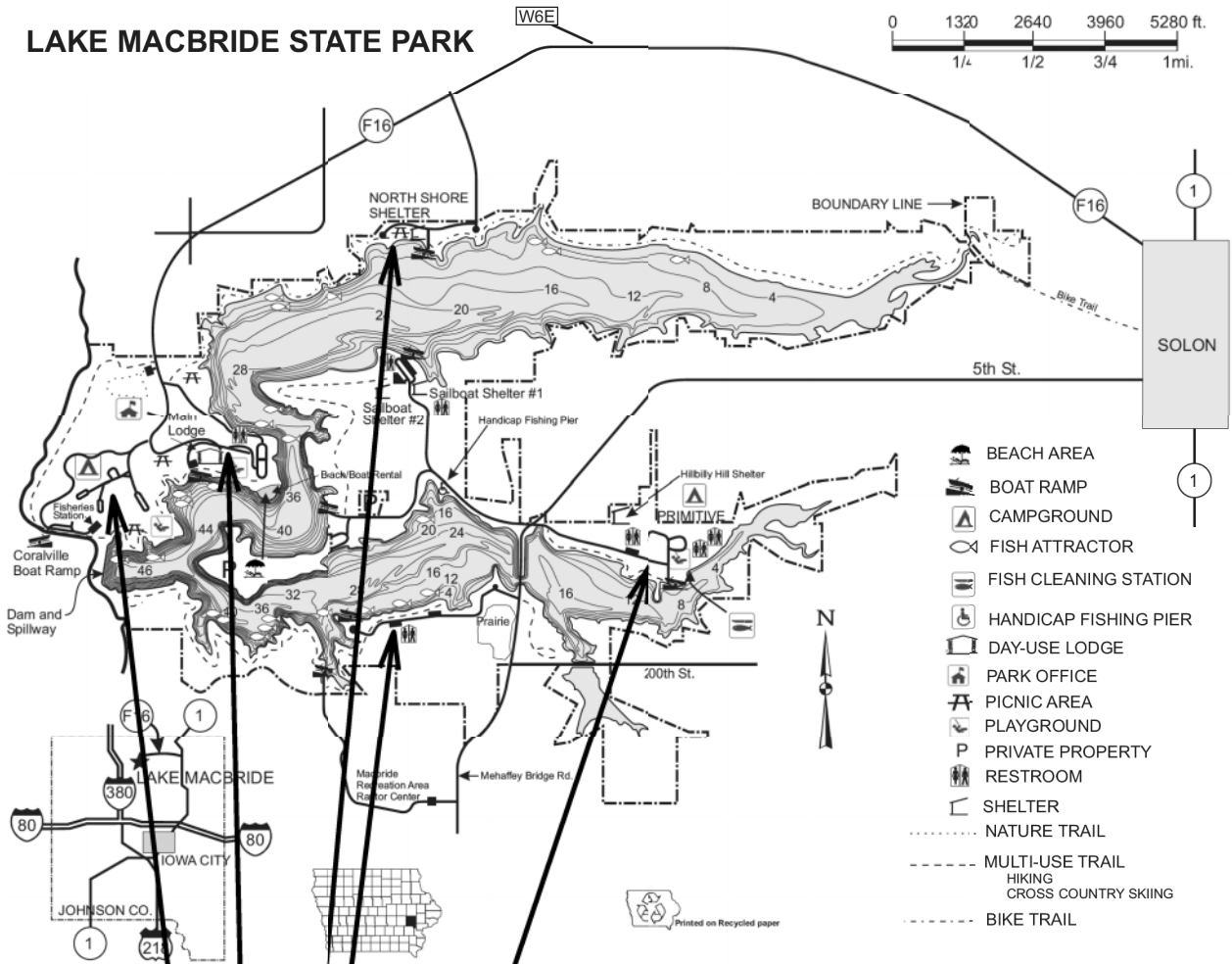
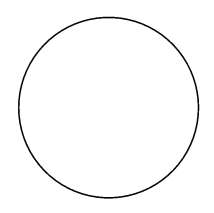


**LAKE MACBRIDE STATE PARK**



- BEACH AREA
- BOAT RAMP
- CAMPGROUND
- FISH ATTRACTOR
- FISH CLEANING STATION
- HANDICAP FISHING PIER
- DAY-USE LODGE
- PARK OFFICE
- PICNIC AREA
- PLAYGROUND
- PRIVATE PROPERTY
- RESTROOM
- SHELTER
- NATURE TRAIL
- MULTI-USE TRAIL
- HIKING
- CROSS COUNTRY SKIING
- BIKE TRAIL

CONSULTANT:



**IOWA DEPARTMENT OF NATURAL RESOURCES**

ENGINEERING SERVICES - WALLACE BUILDING  
502 E. 9TH ST., DES MOINES, IA 50319-0034

**PROJECT LOCATION MAP**

PAVEMENT REPAIR FOR:  
**LAKE MACBRIDE STATE PARK**

JOHNSON COUNTY

NO.	BY	REVISION

DRAWN BY: PROJECT NUMBER:  
BLF 17-06-52-01

CHKD BY: DATE:  
OCT 2010

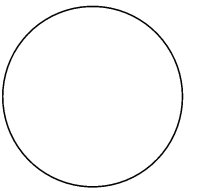
PROJECT LOCATION

ESTIMATED PROJECT QUANTITIES			
ITEM NO.	ITEM	UNIT	TOTAL
1	2306 - BITUMINOUS FOG SEAL (PAVEMENT)	GAL	2447
2	2518 - SAFETY CLOSURE	EACH	3
3	2527 - PAINTED PAVEMENT MARKINGS, HIGH-BUILD WATERBORNE	STA	740
4	2528 - TRAFFIC CONTROL	LS	1
5	2529 - PATCHES, FULL-DEPTH REPAIR, 5-IN., HMA	SY	191
6	2529 - PATCHES, BY COUNT (REPAIR)	EACH	17
7	2533 - MOBILIZATION	EACH	1
8	2540 - LONGITUDINAL JOINT REPAIR	LF	1250
9	2543 - TRANSVERSE JOINT REPAIR	TON	240
10	2544 - CLEANING AND FILLING CRACKS (PAVEMENT MAINTENANCE) HMA	MILE	7.1
11	2544 - HOT MIX ASPHALT FOR CRACK FILLING	TON	1
12	2544 - FILLER MATERIAL (MAINTENANCE)	GAL	1420
13	INLET COVER	EACH	4

ESTIMATE REFERENCE INFORMATION	
ITEM NO.	DESCRIPTION
1	A. Apply at 0.15 GAL/SY. Dilute 1 part emulsion to 4 parts water. Use CSS-1 or SS-1 emulsion. Spread enough sand on campground roads to prevent vehicle tracking. The sand, and its application, is incidental to this item. B. Fog sea all DNR HMA roads.
2	A. 7-day notice required for all road closures.
3	A. Pavement centerline/edge/Bike lane markings.
4	A. Unless noted with Safety Closure, all work must be completed under traffic.
8	A. 12-inches wide, 3-inches deep. Dispose of millings in gravel parking areas as directed by the DNR Field Engineer.
11	A. 18-inch nominal width, 5-inch depth. Width may vary from 12-inches to 24 inches. Dispose of millings in parking areas as directed by the DNR Field Engineer.
13	A. Neenah R-4525, or approved equal.
	Working Hours: 8 am - 5 pm, Monday - Thursday No holidays No work July 1 - July 7

GENERAL NOTES	
<p>Verify actual locations and elevations with DNR Engineer.</p> <p>All work shall conform to and be performed in accordance with all applicable codes and ordinances.</p> <p>The contractor shall visit the site and inspect the project area and thoroughly familiarize themselves with the actual job conditions prior to bidding and the start of work. Failure to visit the project site shall not relieve the contractor from performing the work in accordance to the plans, specification, special provisions and contract.</p> <p>The contractor shall verify, at the site, all dimensions and conditions shown on the plans and shall notify the DNR Engineer of any discrepancies, omissions, and/or conflicts prior to proceeding with the work.</p> <p>It shall be the contractor's responsibility to provide waste areas or disposal sites for excess material (excavated material or broken concrete) which is not desirable to be incorporated into the work involved on this project. No payment for overhaul will be allowed for material hauled to these sites. No material shall be placed within the right-of-way, unless specifically stated in the plans or approved by the DNR Engineer.</p> <p>The contractor shall not disturb desirable grass areas and desirable trees outside the construction limits. The contractor will not be permitted to park or service vehicles and equipment or use these areas for storage of materials. Storage, parking and service areas will be subject to the approval of the DNR Engineer.</p> <p>Where utilities and fixtures are shown as Existing on the plans or encountered within the construction area, it shall be the responsibility of the contractor to notify the DNR Engineer of those utilities prior to the beginning of any construction. The contractor shall be afforded access to these facilities for necessary modification of services. Underground facilities, structures and utilities have been plotted from available surveys and records and therefore their locations must be considered approximate only. It is possible there may be others, the existence of which is presently not known or shown. It is the contractor's responsibility to determine their existence and exact location and to avoid damage thereto. No claims for additional compensation will be allowed to the contractor for any interference or delay caused by such work.</p> <p>The contractor shall shape graded area to maintain surface drainage. All elevations are to finish grade.</p> <p>The contractor is expected to have materials, equipment, and labor available on a daily basis to install and maintain erosion control features on the project. This may involve seeding, silt fence, rock ditch checks, silt basins or silt dikes.</p>	

CONSULTANT:



**IOWA DEPARTMENT OF NATURAL RESOURCES**  
 ENGINEERING SERVICES - WALLACE BUILDING  
 502 E. 9TH ST., DES MOINES, IA 50319-0034



**QUANTITIES AND GENERAL INFORMATION**

PAVEMENT REPAIR FOR:  
**LAKE MACBRIDE STATE PARK**  
 JOHNSON COUNTY

NO.	BY	REVISION

DRAWN BY: BLF PROJECT NUMBER: 17-06-52-01  
 CHKD BY: DATE: OCT 2010

SHEET No: **C.01**

Park Office

Sheets 2, 3 and 4

Sheet 5

Sheet 6

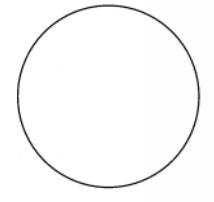
Sheet 7

Sheet 8

Project Locations

Solon

CONSULTANT:



IOWA DEPARTMENT OF NATURAL RESOURCES

ENGINEERING SERVICES - WALLACE BUILDING  
502 E. 9TH ST., DES MOINES, IA 50319-0034



SITE PLAN

PAVEMENT REPAIR FOR:

LAKE MACBRIDE STATE PARK

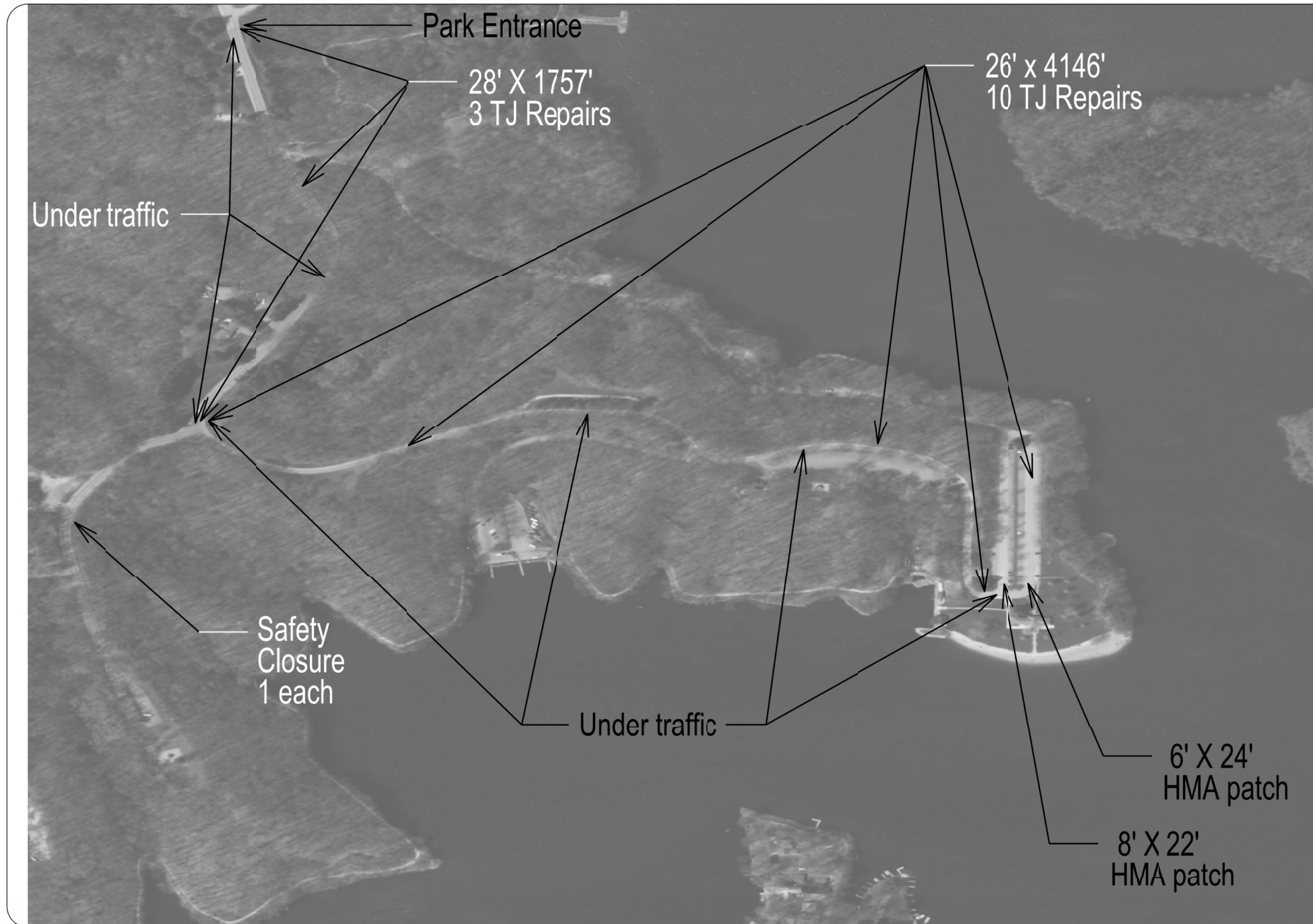
JOHNSON COUNTY

NO.	BY	REVISION

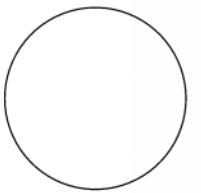
DRAWN BY: BLF PROJECT NUMBER: 17-06-52-01  
 CHK'D BY: DATE: OCT 2010

SHEET No:

**D.01**



CONSULTANT:



**IOWA DEPARTMENT OF  
NATURAL RESOURCES**

ENGINEERING SERVICES - WALLACE BUILDING  
502 E. 9TH ST., DES MOINES, IA 50319-0034



**SITE PLAN**

PAVEMENT REPAIR FOR:

LAKE MACBRIDE STATE PARK

JOHNSON COUNTY

NO. BY REVISION

NO.	BY	REVISION

DRAWN BY: PROJECT NUMBER:

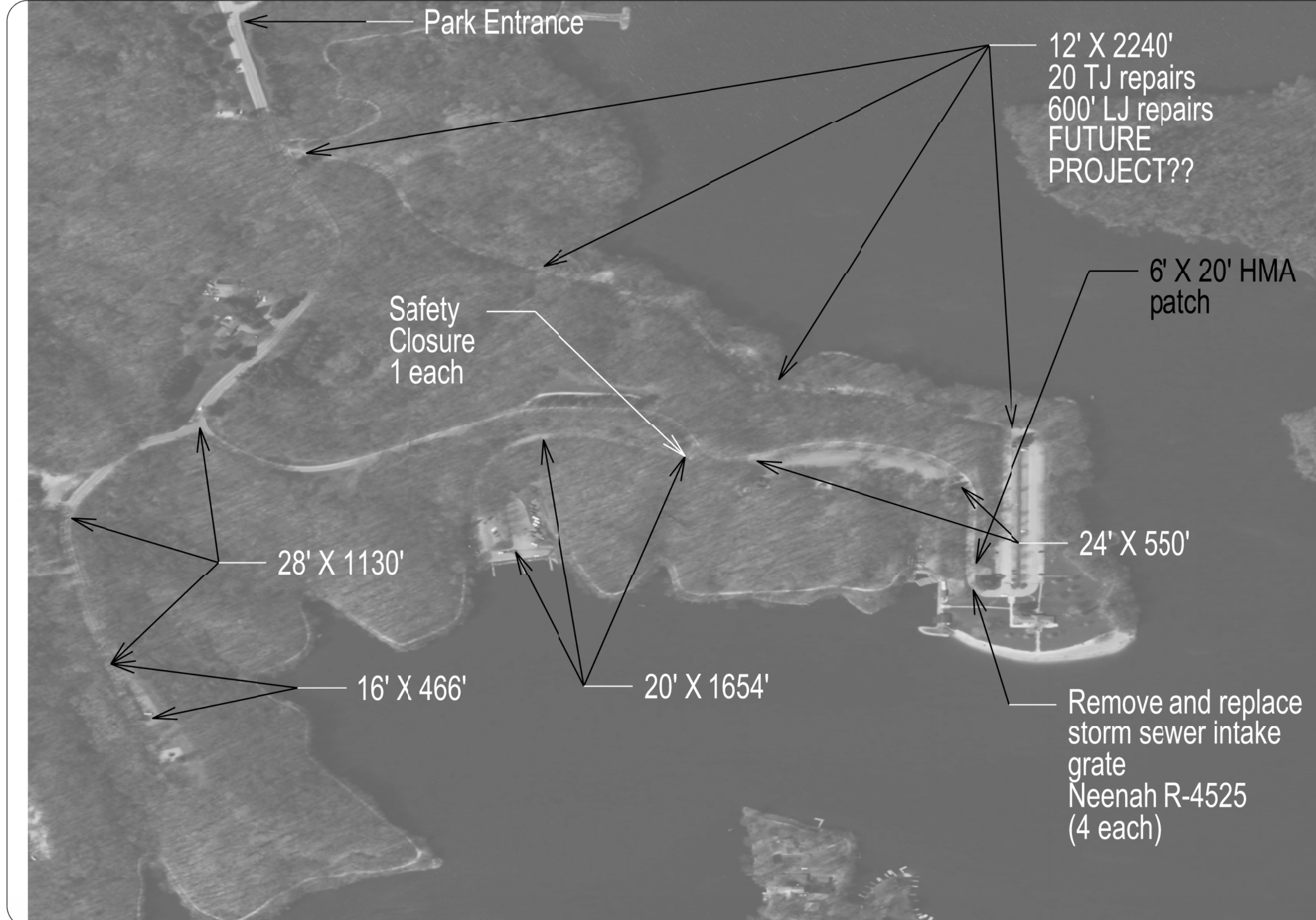
BLF 17-06-52-01

CHKD BY: DATE:

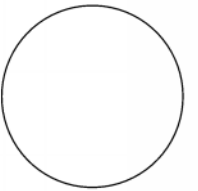
OCT 2010

SHEET No:

**D.02**



CONSULTANT:



**IOWA DEPARTMENT OF  
NATURAL RESOURCES**

ENGINEERING SERVICES - WALLACE BUILDING  
502 E. 9TH ST., DES MOINES, IA 50319-0034



**SITE PLAN**

PAVEMENT REPAIR FOR:

**LAKE MACBRIDE STATE PARK**

JOHNSON COUNTY

NO.	BY	REVISION

DRAWN BY:	PROJECT NUMBER:
BLF	17-06-52-01
CHKD BY:	DATE:
	OCT 2010

SHEET No: **D.03**

21' X 6254'  
6 TJ repairs  
150' LJ repairs

20' X 650'  
35 TJ repairs  
100' LJ repairs

11' X 14' patch

12' X 517' - Loop

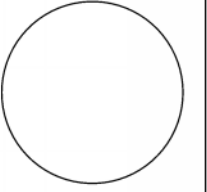
5' X 5' patch

14' X 184' - Loop

20' X 1460' - road  
18' X 90' -  
dump station lane  
3' X 10' patch (DS)  
3' X 90' patch (DS)  
15' X 18' patch (exit)  
10' X 35' (exit)  
1 TJ repair

6' X 6' patch

CONSULTANT:



**IOWA DEPARTMENT OF  
NATURAL RESOURCES**  
ENGINEERING SERVICES - WALLACE BUILDING  
502 E. 9TH ST., DES MOINES, IA 50319-0034



**SITE PLAN**

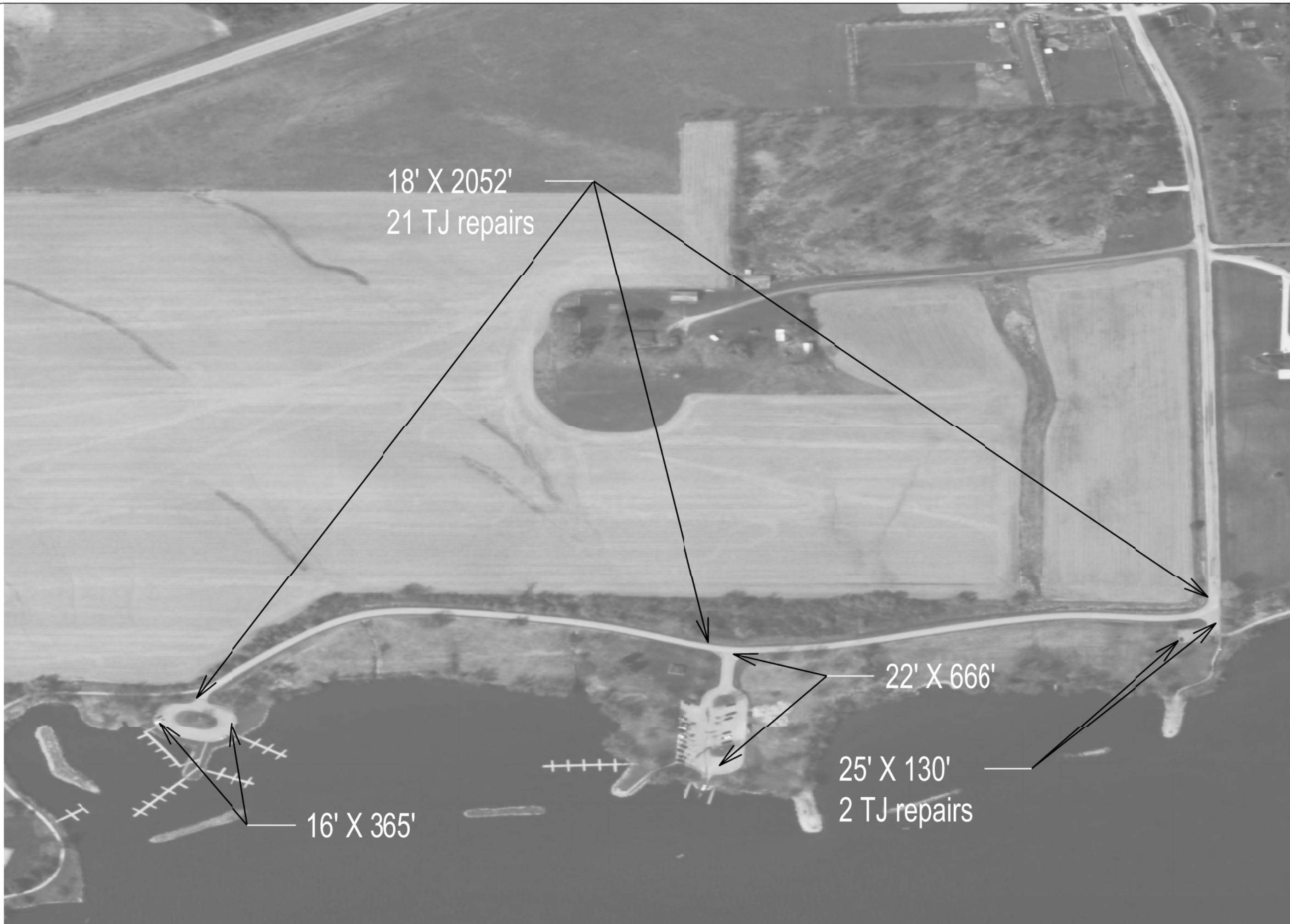
PAVEMENT REPAIR FOR:  
**LAKE MACBRIDE STATE PARK**

JOHNSON COUNTY

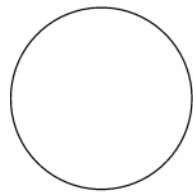
NO.	BY	REVISION

DRAWN BY: BLF	PROJECT NUMBER: 17-06-52-01
CHKD BY:	DATE: OCT 2010

SHEET No:  
**D.04**



CONSULTANT:



**IOWA DEPARTMENT OF  
NATURAL RESOURCES**

ENGINEERING SERVICES - WALLACE BUILDING  
502 E. 9TH ST., DES MOINES, IA 50319-0034



**SITE PLAN**

PAVEMENT REPAIR FOR:

**LAKE MACBRIDE STATE PARK**

JOHNSON COUNTY

NO.	BY	REVISION

DRAWN BY: PROJECT NUMBER:  
BLF 17-06-52-01

CHKD BY: DATE:  
OCT 2010

SHEET No:

**D.05**



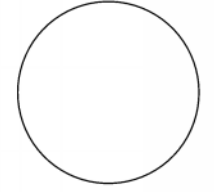
18' X 1466'  
35 TJ repairs  
12'X12', 8'X10'  
12'X18' patches

18' X 1877'  
23 TJ repairs

10' X 362'  
8' X 8' patch

14' X 530'  
7 TJ repairs

CONSULTANT:



IOWA DEPARTMENT OF  
NATURAL RESOURCES

ENGINEERING SERVICES - WALLACE BUILDING  
502 E. 9TH ST., DES MOINES, IA 50319-0034



SITE PLAN

PAVEMENT REPAIR FOR:

LAKE MACBRIDE STATE PARK

JOHNSON COUNTY

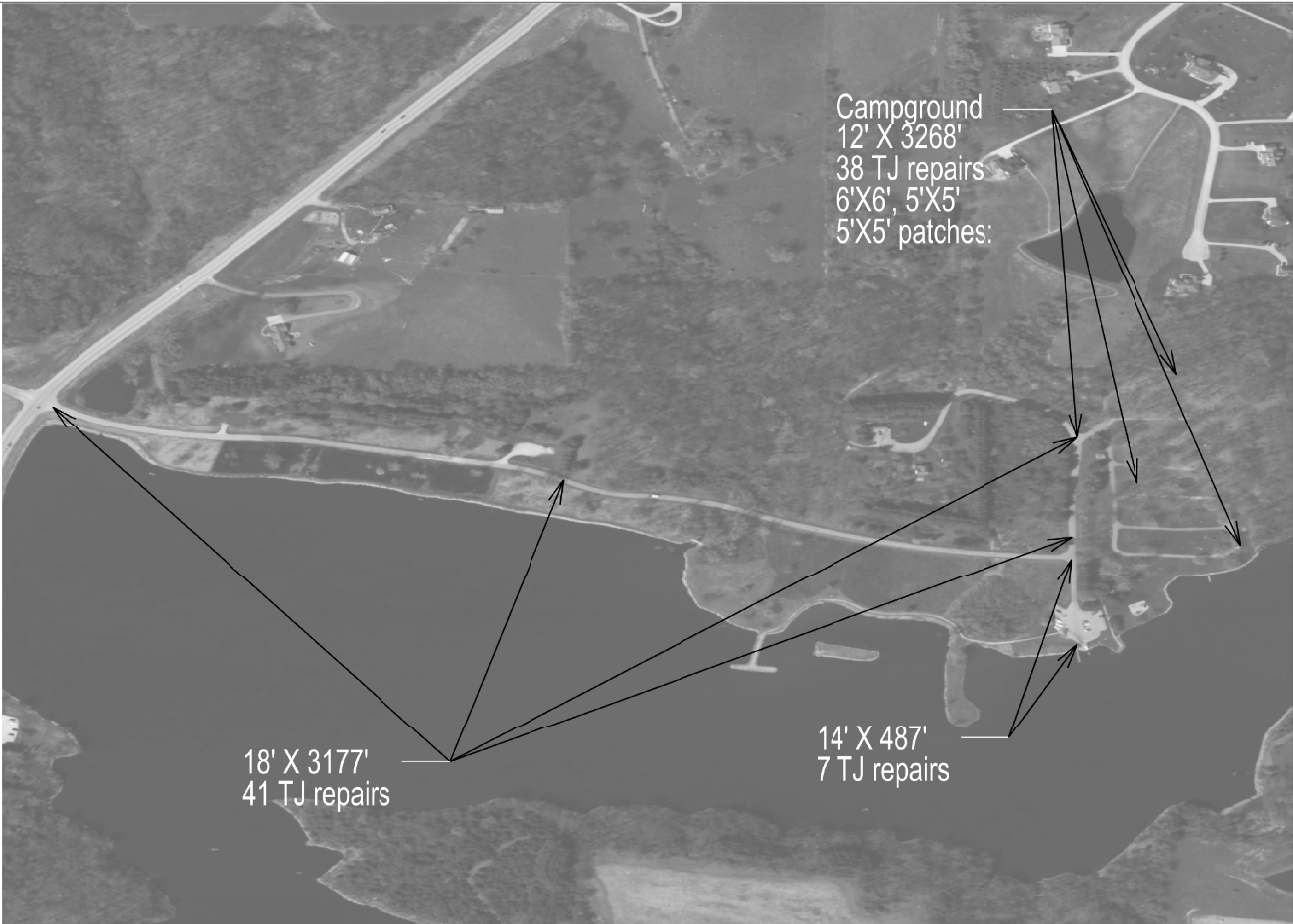
NO.	BY	REVISION

DRAWN BY: BLF PROJECT NUMBER: 17-06-52-01

CHKD BY: DATE: OCT 2010

SHEET No:

**D.06**

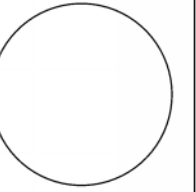


Campground  
12' X 3268'  
38 TJ repairs  
6'X6', 5'X5'  
5'X5' patches:

18' X 3177'  
41 TJ repairs

14' X 487'  
7 TJ repairs

CONSULTANT:



IOWA DEPARTMENT OF  
NATURAL RESOURCES

ENGINEERING SERVICES - WALLACE BUILDING  
502 E. 9TH ST., DES MOINES, IA 50319-0034



SITE PLAN

PAVEMENT REPAIR FOR:

LAKE MACBRIDE STATE PARK

JOHNSON COUNTY

NO. REV. REVISION


DRAWN BY: PROJECT NUMBER:

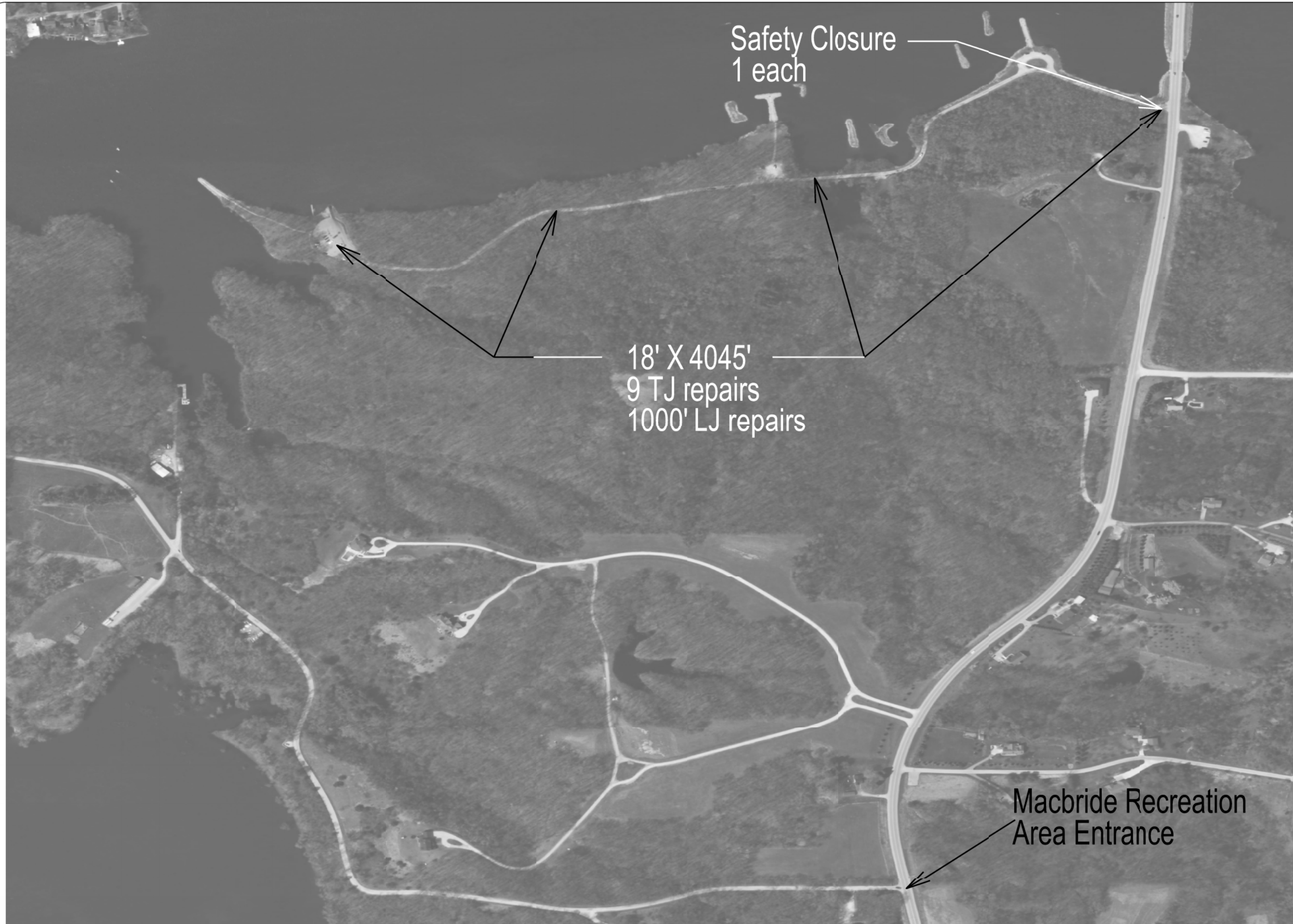
BLF 17-06-52-01

CHK'D BY: DATE:

  OCT 2010

SHEET No:

**D.07**

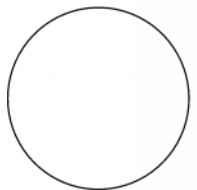


Safety Closure  
1 each

18' X 4045'  
9 TJ repairs  
1000' LJ repairs

Macbride Recreation  
Area Entrance

CONSULTANT:



IOWA DEPARTMENT OF  
NATURAL RESOURCES

ENGINEERING SERVICES - WALLACE BUILDING  
502 E. 9TH ST., DES MOINES, IA 50319-0034



SITE PLAN

PAVEMENT REPAIR FOR:

LAKE MACBRIDE STATE PARK

JOHNSON COUNTY

NO.	BY	REVISION

DRAWN BY:	PROJECT NUMBER:
BLF	17-06-52-01
CHK'D BY:	DATE:
	OCT 2010

SHEET NO:

D.08